

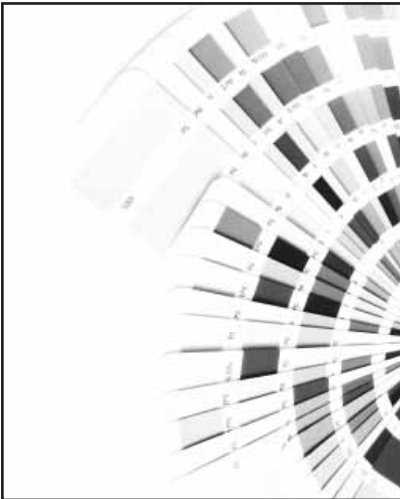


PUTTING IT ALL TOGETHER

Progressives are prints from one or more units of a press printing a multi-colour job, with other units turned off so they don't print.

As the paper moves through the press during the normal printing process, these individual prints from each unit (printing plate) are overlaid on each other to form the finished image. When one or more of these units is turned off so they don't print, this results in an incomplete finished image, or "progressive".

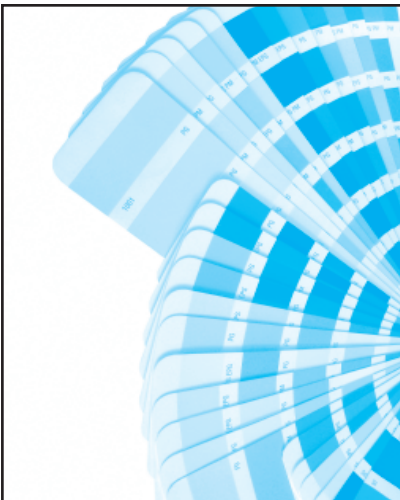
Single colour progressives are used by the printer to check the quality and integrity of the printed image, and two or more colour progressives may be used to ensure perfect register from one colour to the next.



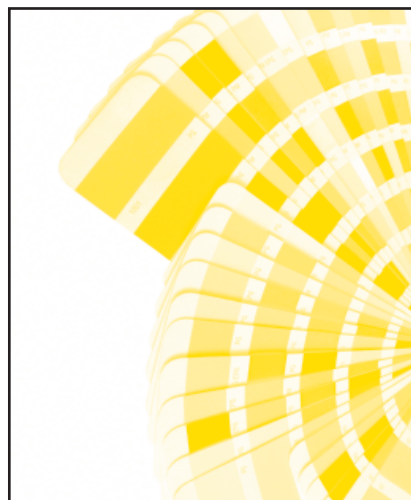
BLACK



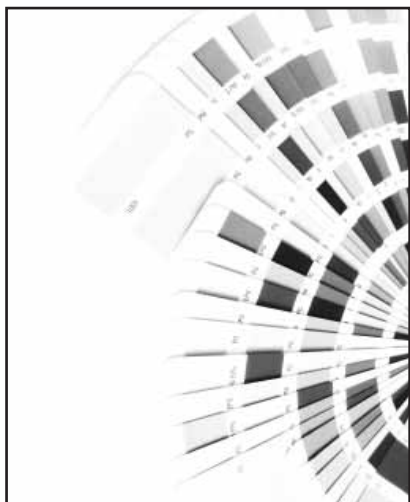
MAGENTA



CYAN



YELLOW



BLACK



BLACK & MAGENTA



BLACK, MAGENTA & CYAN



BLACK, MAGENTA, CYAN & YELLOW